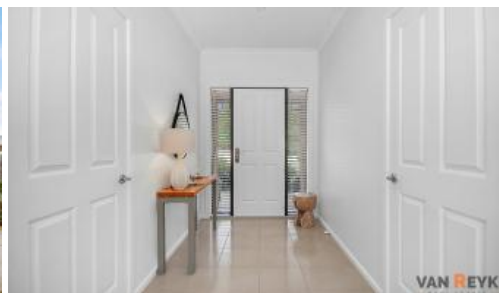


Sold



Unit 1, 22 Victoria St, Bairnsdale



## Stylish & Low-Maintenance Living in a Convenient Location

This beautifully maintained 2-bedroom unit offers space, comfort and quality finishes throughout, perfect for downsizers, investors or anyone seeking an easy-care lifestyle close to everything.

Step inside to a spacious tiled entry and high ceilings that enhance the sense of light and openness. The open-plan living and dining area flows seamlessly to a well-appointed kitchen featuring a gas cooktop, electric oven and dishwasher.

At the rear, enjoy a paved north facing courtyard that's both private and secure, ideal for entertaining or relaxing under the retractable electric sun shelter awning. The rear windows are fitted with electric shade blinds, adding modern convenience and comfort.

Additional highlights include:

- Internal access from the remote garage
- Recently repainted interior
- Attractive fretwork on the front verandah
- Durable steel roof
- Front and rear gardens with established greenery
- Light-filled bedrooms with built-in robes

All of this just moments from the hospital, RSL, IGA/APCO, medical centre, chemist and West End shops.

2 1 1

Price	SOLD
Property Type	Residential
Property ID	101

### Agent Details

Dennis van Reyk - 0409 524 780

### Office Details

VAN REYK REAL ESTATE  
BAIRNSDALE  
0409 524 780

**VAN REYK**  
— REAL ESTATE —

Whether you're looking to move straight in or add a quality property to your portfolio, this unit ticks all the boxes.

Inspect now and make it yours! contact Dennis van Reyk on 0409 524 780

The above information provided has been furnished to us by the vendor/s. We have not verified whether or not that information is accurate and do not have any belief in one way or the other in its accuracy. We do not accept any responsibility to any person for its accuracy and do no more than pass it on. All interested parties should make and rely upon their own inquiries in order to determine whether or not this information is in fact accurate.