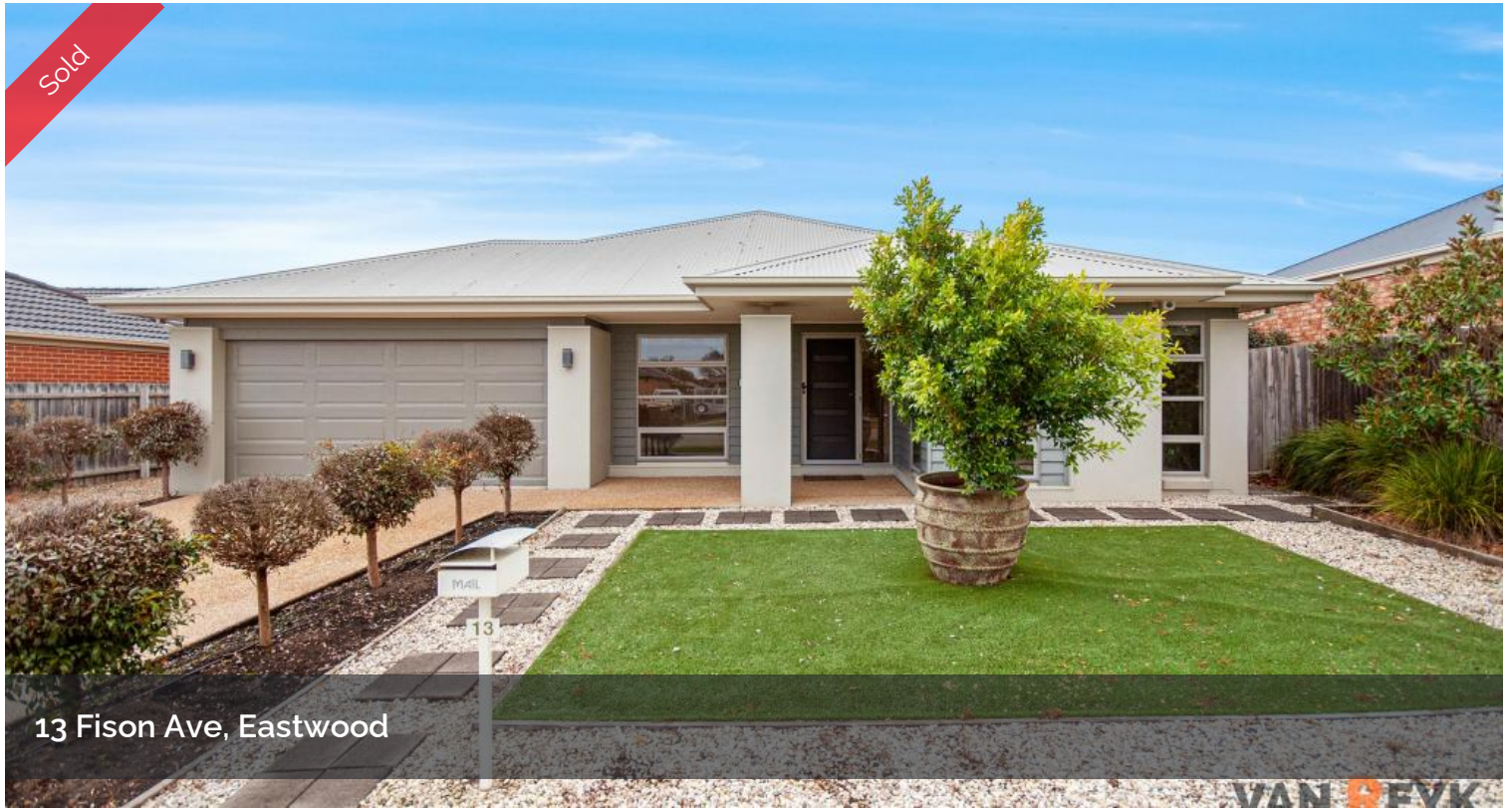
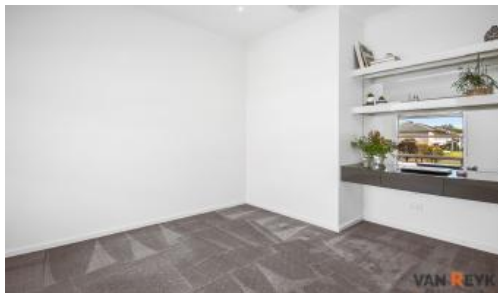


Sold



13 Fison Ave, Eastwood



Ex Steel Frame Display Home - Walk to Eastwood Shops, Medical & Dental Clinics

Conveniently located a short walk to Eastwood Shopping Centre and Medical facilities, this ex-display home has many quality features starting with its steel frame that is stronger, and resistant to termite and weather damage. It is set on a roomy 893 sqm block with side vehicle access to rear north facing yard. When originally built there were many upgrades including stone benchtops throughout, quality fixtures and fittings.

Other Inclusions:

Three bedrooms plus study

Family room, dining area and lounge room

Feature Hardwood floors

Kitchen with glass splashback, waterfall island bench, gas cooktop

Ducted gas heating and evaporative cooling

Solar hot water with gas instantaneous boost

Double garage with internal access,

Room for more vehicles next to main driveway

Security mesh to front door and alarm system

North facing alfresco

Irrigation system to garden

🚗 3 🚗 2 🚗 4 📏 893m²

Price	SOLD
Property Type	Residential
Property ID	59
Land Area	893 m ²

Agent Details

Dennis van Reyk - 0409 524 780

Office Details

VAN REYK REAL ESTATE
BAIRNSDALE
0409 524 780

VAN REYK
— REAL ESTATE —

Large van port 11m x 5m x 3.5M

Garden shed & Water tank

For inspection contact Dennis van Reyk on 0409 524 780 at **VAN REYK
REAL ESTATE BAIRNSDALE.**

The above information provided has been furnished to us by the vendor/s. We have not verified whether or not that information is accurate and do not have any belief in one way or the other in its accuracy. We do not accept any responsibility to any person for its accuracy and do no more than pass it on. All interested parties should make and rely upon their own inquiries in order to determine whether or not this information is in fact accurate.